

## PROFILE QUICK CHECKLIST

1. Never alter the data (test file) we need to print for creating the profile.
2. Download the targets ([www.digitaldog.net/services.html](http://www.digitaldog.net/services.html))
3. Set your printer defaults.
  - a. The printer must remain consistently set to the settings used to print the test form – no color sync, no automatic adjustment.
  - b. Never use automatic corrections in the print driver. Auto corrections virtually insure that the drive is altering the print data on a case by case basis. We want the printer to remain consistent so we can fingerprint it.
4. Print the targets.
5. Send us the printed targets

**Note:** It is also helpful to send us a blank sheet of paper of the same type as the target print in case we need to do any testing and printing on this end.

Andrew Rodney

The Digital Dog

30 Gavilan Road

Santa Fe, NM 87508

thedigitaldog@earthlink.net

andrew@digitaldog.net <http://digitaldog.net/>

## Downloading the Targets

**Q: Where do I access the files to download the Print targets?**

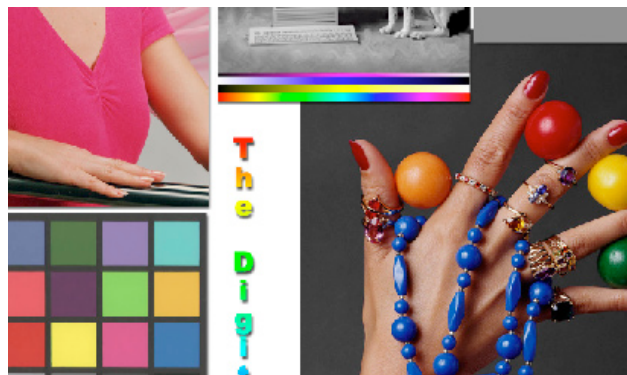
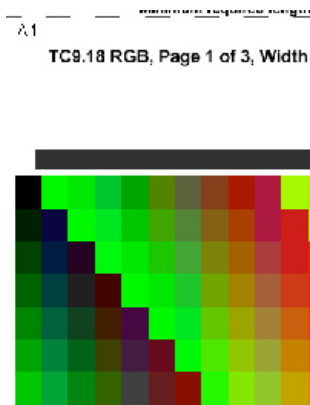
[www.digitaldog.net/services.html](http://www.digitaldog.net/services.html)

**Q: I downloaded the targets to print for custom profile. Do I need to worry about the proof set-up?**

No. You do not need to worry about soft proofing for printing the targets for a profile.

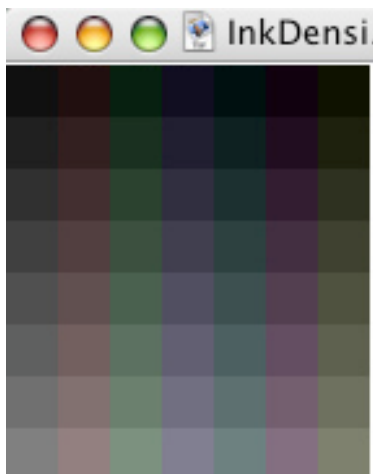
**Q: What are the files that I am downloading?**

You will be downloading the following files that will allow us to measure and create a custom profile for your printer:



1. Unless you are downloading the 1 page target, you will be downloading 2 printer targets that will be printed and sent to us.

2. The Printer Test file is a file that has good, known color from which to test your profile.



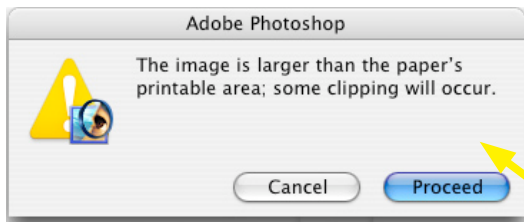
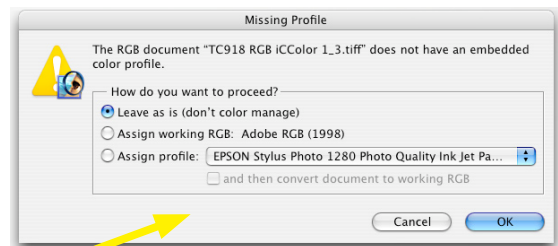
3. The ink density file is a rough way to pick paper settings when you have a 3rd party paper and it is unclear as to which setting will suit your needs.

*If you're not seeing much differences in the Ink Density OR you have an Epson paper (and setting in the driver), try using the No Color Adjustment settings since most people seem to be fine going this route and most users do want the maximum gamut their printer can muster. If you use a 3rd party paper and notice that the patches for the profile are all mashed together with ink running off the sheet, then it's time to investigate a more appropriate printer setting.*

## Printing the Targets

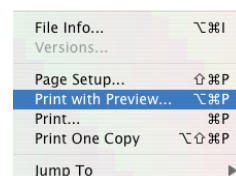
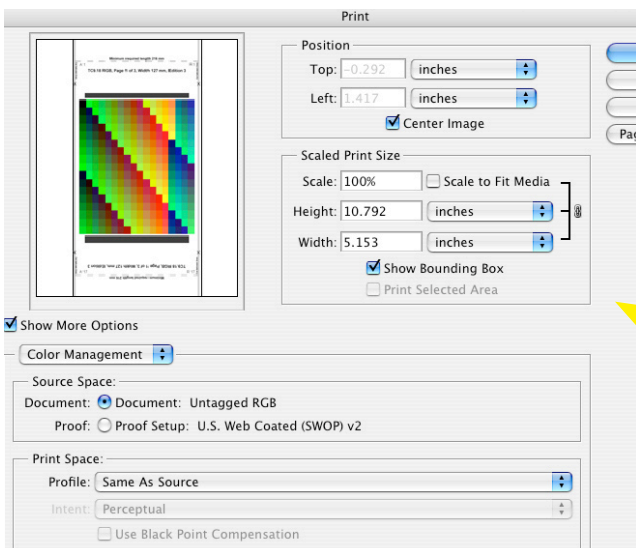
**Q: How do I open the targets in Photoshop?**

When you initially open the targets in PS, select *Leave as is, don't color manage.* You will be printing all three targets unless your equipped to print the one page target



**Q: I'm about to print my targets. Do I need to color manage my targets and do I need to resize the images to fit the page?**

Do not color manage the targets. The patches MUST be output at 100%! The very top of one part of the image may get cut off but you'll see there's a minimum crop area (trim area) which it will fall within easily. Please measure your targets before you send them to us. If they don't fit into the machine, you have to reprint them and send them again.



*You can access this screen by selecting print preview.*

## Q: What settings do I use to print my targets?

1. When you initially open the target in Photoshop, select “Leave as is (don’t color manage)” - fig. 1
2. The targets should be printed at 100% - see above and fig. 2.
3. Select your paper type and print quality - fig. 3.
4. Under Color Management, select No color Adjustment - fig. 4
5. Print.

fig. 1

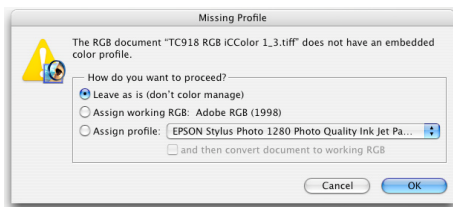


fig. 2

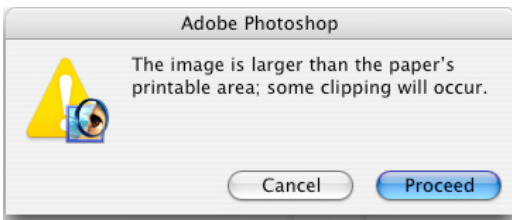


fig. 4

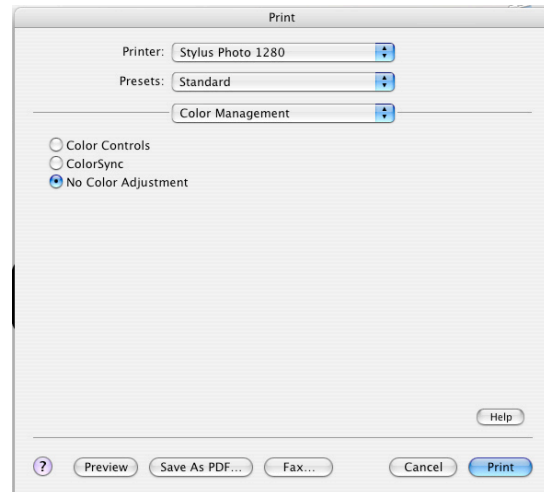
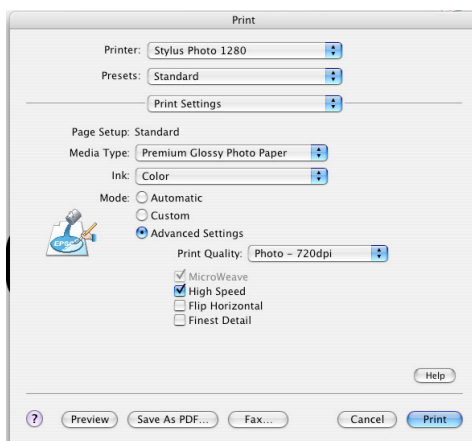


fig. 3



*Please note: We have selected advanced settings as most users will want to do as well. All settings that are used to print your targets must be duplicated with every other image to be printed with the resulting profile.*

# Using Your Custom Profile

## Q: Where do my profiles get installed?

This depends on the operating system you are using. The first step to properly installing your profile is to make sure that you decompress (UnZip) the file after you download it. Certain browsers and service providers can alter the files, so be sure to confirm that the file is not corrupt.

This is the appropriate application to decompress the files:

### Macintosh - Stuffit Expander

## Macintosh Running OS 9

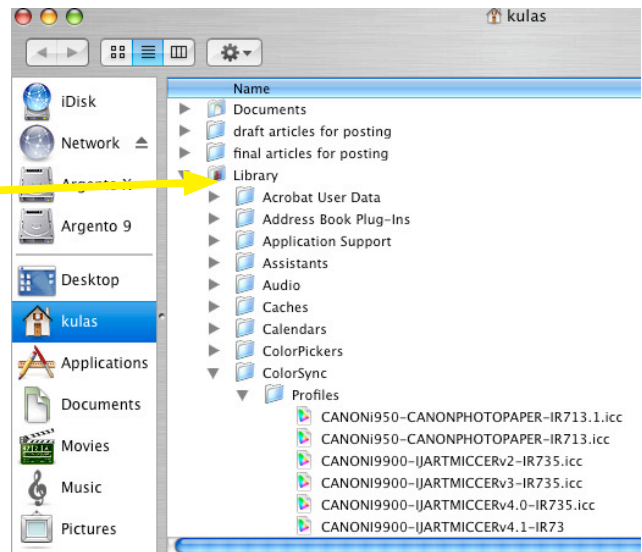
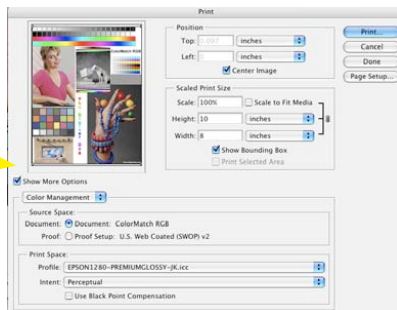
Simply drag and drop the uncompressed profile over your System Folder and it will automatically be placed in the ColorSync folder.

Note: If you do NOT get a message that the ICC profile is automatically being placed in the correct location, you may not have uncompressed the file correctly. You can also just open the System Folder and place the profile in the ColorSync folder. You will not need to restart.

## Macintosh Running OS X

We suggest that you place your profiles here: /Users/Library/ColorSync/Profiles/

*This is what you should see when loading your profile in PS.*



Further information regarding the installation of profiles for Windows can be found [here](#).

**Q: I'm working on a MAC and you built the profile on a PC. Is this a problem?**

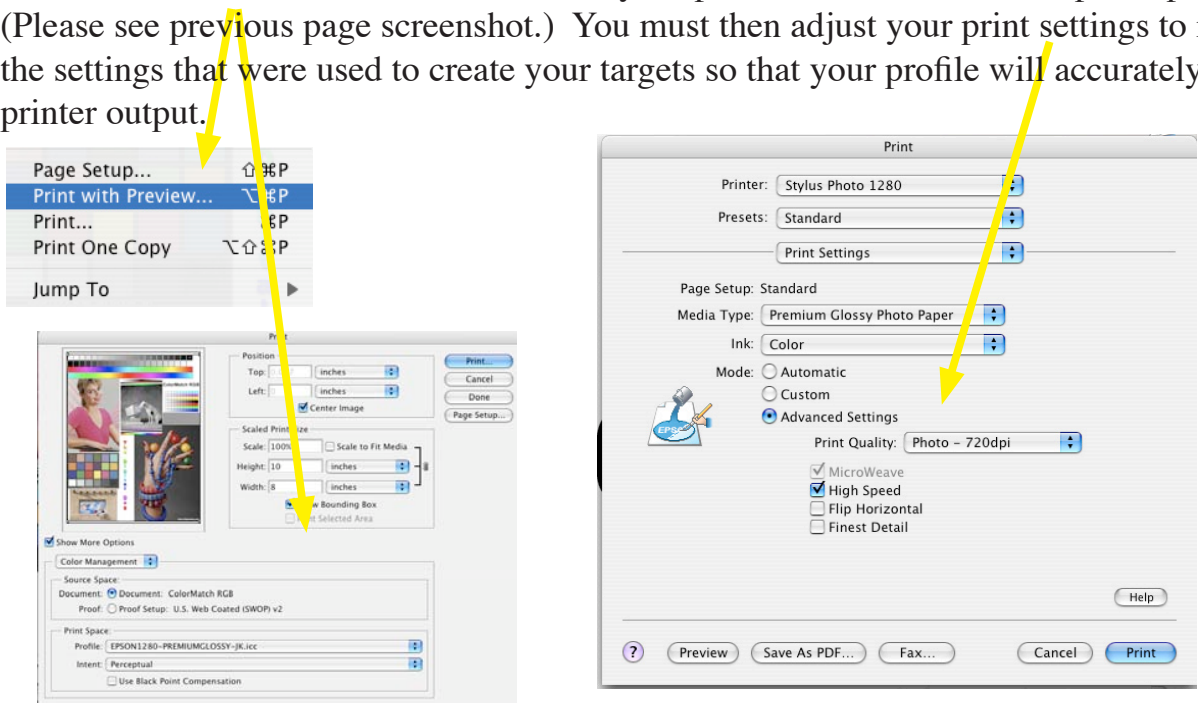
No, not at all. Notice that we have placed the .icc extension on all profiles we build so your MAC will know what to do with the file. No extension is needed under Mac OS 9, but it does not hurt to have it there.

**Q: The profile you sent is a very large file and all my other profiles are much smaller, why?**

When building a profile, we have the ability to use more data points in the profile for better quality and that is why the profiles are so large.

**Q: Where in PS do I apply the profile?**

Select Print Preview and from there select your profile from the list in the print space. (Please see previous page screenshot.) You must then adjust your print settings to match the settings that were used to create your targets so that your profile will accurately adjust printer output.



**Q: I misplaced my profile, how do I go about getting another one?**

Contact us, we can regenerate the profile since we save the measured data.







